



AGRONA

Manufacturer of agricultural machinery

Better farming



Product catalog

September 2024

INDEX

DISC HARROWS	5
Powerdisc	6
Powerdisc Light	7
Powerdisc R	8
Powerdisc S	9
Powerdisc HXL	10
Powerdisc HR	12
STUBBLE CULTIVATORS	15
AP/APN	16
APS	17
TERRAFLEX M	18
TERRAFLEX	19
STUBBLER	20
CULTIVATION	23
Powerseed	24
Powerseed 300+	25
Frontdisc	26
AUS	27
AU	28
WNT	29
SUBSOILERS	31
Multi GV	32
Plower M	33
Multi GI	34
Multi G	35
ROLLERS	37
AFRERCROP SEEDER	38



AGRONA
Better farming



AGRONA

Manufacturer of agricultural machinery

Better farming

**DISC
HARROWS**

disc harrow

POWERDISC



STANDARD

- maintenance-free hubs
- 2 rows of discs Ø560 mm
- rubber shock absorbers
- tubular roller Ø560 mm OR flat bar roller Ø500 mm
- side screens
- folding side discs in the 3 m version
- working depth adjustment with turnbuckles
- spacing between disc rows - 100 cm

OPTIONS

- Italian disccs Ø560 mm by OFAS
- Italian disccs Ø560 mm by AMA
- Italian disccs Ø610 mm by AMA
- LED lighting
- turnbuckle with ratchet
- row of springs tines
- floating side screens
- hydraulic depth adjustment

ROLLERS

- FLEX ring roller Ø450 mm
- flat-bar notched roller Ø500 mm
- croskill roller Ø500 mm
- packer roller Ø500/ Ø600 mm
- rubber roller Ø500 mm
- V-ring roller Ø500/ Ø600 mm
- C-ring roller Ø500/ Ø600 mm
- T-ring roller Ø500/ Ø600 mm
- cracker roller Ø600 mm
- tandem C-ring roller Ø500 mm

TECHNICAL DATA

Model	Working width [m]	Count discs [pcs.]	Weight [kg]	Power demand [HP]	Efficiency [ha/h]
Powerdisc 250	2,5	20	1 130	60 - 90	1,80 - 2,20
Powerdisc 270	2,7	22	1 200	75 - 120	1,80 - 2,60
Powerdisc 300	3,0	24	1 350	90 - 130	2,00 - 3,20
Powerdisc 350	3,5	28	1 600	100 - 140	2,40 - 3,50
Powerdisc 400	4,0	32	1 850	120 - 150	2,80 - 3,80

Tandem rollers available: C-ring / T-ring / V-ring / tubular-string / tubular-tubular / string-string - **please contact us!**
 We offer the possibility of installing aftercrop seeders to most of the machines in our offer. More information on page 38.

disc harrow

POWERDISC

LIGHT



STANDARD

- maintenance-free hubs
- 2 rows of discs Ø560 mm
- rubber shock absorbers
- tubular roller Ø560 mm OR flat bar roller Ø500mm
- side screens
- folding side discs in the 3 m version
- spacing between disc rows – 95 cm

- Italian disccs Ø560 mm by OFAS
- Italian disccs Ø560 mm by AMA
- Italian disccs Ø610 mm by AMA
- LED lighting
- row of springs tines
- hydraulic depth adjustment
- floating side screens
- turnbuckle with ratchet

OPTIONS

ROLLERS

- FLEX ring roller Ø450 mm
- flat-bar notched roller Ø500 mm
- croskill roller Ø500 mm
- packer roller Ø500/ Ø600 mm
- rubber roller Ø500 mm
- V-ring roller Ø500/ Ø600 mm
- C-ring roller Ø500/ Ø600 mm
- T-ring roller Ø500/ Ø600 mm
- cracker roller Ø600 mm
- tandem C-ring roller Ø500 mm

TECHNICAL DATA

Model	Working width [m]	Count discs [pcs.]	Weight [kg]	Power demand [HP]	Efficiency [ha/h]
Powerdisc light 250	2,5	20	1 110	60 - 90	1,80 - 2,20
Powerdisc light 270	2,7	22	1 200	75 - 120	1,80 - 2,60
Powerdisc light 300	3,0	24	1 290	90 - 130	2,00 - 3,20
Powerdisc light 350	3,5	28	1 360	100 - 140	2,40 - 3,50
Powerdisc light 400	4,0	32	1 700	120 - 150	2,80 - 3,80

Tandem rollers available: C-ring / T-ring / V-ring / tubular-string / tubular-tubular / string-string - **please contact us!**

We offer the possibility of installing aftercrop seeders to most of the machines in our offer. More information on page 38.

POWERDISC R



STANDARD

- maintenance-free hubs
- 2 rows of discs Ø560 mm
- rubber shock absorbers
- tubular roller Ø560 mm OR flat bar roller Ø500 mm
- side screens
- folding side discs in the 3 m version
- working depth adjustment with turnbuckles
- spacing between disc rows 100 cm

OPTIONS

- wavy Bulldog discs Ø560 mm or Ø610 mm
- Italian disccs Ø560 mm by OFAS
- Italian disccs Ø560 mm by AMA
- Italian disccs Ø610 mm by AMA
- LED lighting
- turnbuckle with ratchet
- row of springs tines
- floating side screens
- hydraulic depth adjustment

ROLLERS

- FLEX ring roller Ø450 mm
- flat-bar notched roller Ø500 mm
- croskill roller Ø500 mm
- packer roller Ø500/ Ø600 mm
- rubber roller Ø500 mm
- V-ring roller Ø500/ Ø600 mm
- C-ring roller Ø500/ Ø600 mm
- T-ring roller Ø500/ Ø600 mm
- cracker roller Ø600 mm
- tandem C-ring roller Ø500 mm

TECHNICAL DATA

Model	Working width [m]	Count discs [pcs.]	Weight [kg]	Power demand [HP]	Efficiency [ha/h]
Powerdisc R 300	3,0	24	1 350	90 - 130	2,00 - 3,20
Powerdisc R 350	3,5	28	1 600	100 - 140	2,40 - 3,50
Powerdisc R 400	4,0	32	2 200	120 - 150	2,80 - 3,80

Tandem rollers available: C-ring / T-ring / V-ring / tubular-string / tubular-tubular / string-string - **please contact us!**

We offer the possibility of installing aftercrop seeders to most of the machines in our offer. More information on page 38.

**STANDARD**

- maintenance-free hubs
- 2 rows of discs Ø560 mm
- tubular roller Ø560 mm OR flat bar roller Ø500 mm
- side screens
- rubber shock absorbers
- spacing between disc rows 85 cm

- Italian discs Ø560 mm by OFAS
- Italian discs Ø560 mm by AMA
- LED lighting
- row of springs tines
- hydraulic depth adjustment
- floating side screens

OPTIONS**ROLLERS**

- FLEX ring roller Ø450 mm
- flat-bar notched roller Ø500 mm
- packer roller Ø500/ Ø600 mm
- V-ring roller Ø500/ Ø600 mm
- C-ring roller Ø500/ Ø600 mm

TECHNICAL DATA

Model	Working width [m]	Count discs [pcs.]	Weight [kg] *	Power demand [HP]	Efficiency [ha/h]
Powerdisc S 150	1,5	12	750 *	50 - 60	1,00 - 1,50
Powerdisc S 180	1,8	14	820 *	60 - 70	1,10 - 1,70
Powerdisc S 200	2,0	16	890 *	70 - 80	1,30 - 2,00

* - **lighter version** of the Powerdisc S disc harrow available - **please contact us!**

Tandem rollers available: C-ring / T-ring / V-ring / tubular-string / tubular-tubular / string-string - **please contact us!**

We offer the possibility of installing aftercrop seeders to most of the machines in our offer. More information on page 38.

POWERDISC HXL



STANDARD

- maintenance-free hubs
- 2 rows of discs Ø560 mm
- rubber shock absorbers
- side screens
- tubular roller Ø560 mm OR flat bar roller Ø500 mm
- spacing between disc rows 100 cm
- 4 hydraulic cylinders with overload valves
- hydraulic locks

- Italian disccs Ø560 mm by OFAS
- Italian disccs Ø560 mm by AMA
- Italian disccs Ø610 mm by AMA
- single support wheels (2 pcs) - adjustment using a connector / turnbuckle
- double support wheels (4 pcs) - adjustment using a connector / turnbuckle
- LED lighting
- row of springs tines
- hydraulic support foot
- hydraulically adjustable drawbar + hydraulic accumulator

- turnbuckle with ratchet
- hydraulic depth adjustment
- floating side screens
- single axle transport trolley with drawbar (type A)
- single axle trolley (folded over the machine) + drawbar (type B)
- single axle trolley (mounted in front of the roller / hydraulic folding rollers) + drawbar (type C)

OPTIONS

ROLLERS

- FLEX ring roller Ø450 mm
- flat-bar notched roller Ø500 mm
- croskill roller Ø500 mm
- packer roller Ø500/ Ø600 mm
- rubber roller Ø500 mm
- V-ring roller Ø500/ Ø600 mm
- C-ring roller Ø500/ Ø600 mm
- T-ring roller Ø500/ Ø600 mm
- cracker roller Ø600 mm
- tandem C-ring roller Ø500 mm

TECHNICAL DATA

Model	Working width [m]	Count discs [pcs.]	Weight [kg]	Power demand [HP]	Efficiency [ha/h]
Powerdisc HXL 400	4,0	32	2 450	110 - 150	2,80 - 3,90
Powerdisc HXL 450	4,5	36	2 600	130 - 160	3,20 - 4,50
Powerdisc HXL 500	5,0	40	3 100	140 - 180	4,00 - 6,00
Powerdisc HXL 600	6,0	48	3 950	160 - 250	4,50 - 6,50
Powerdisc HXL 800*	8,0	68	-	>220	-

* - configuration of the Powerdisc HXL 800 machine on request

Tandem rollers available: C-ring / T-ring / V-ring / tubular-string / tubular-tubular / string-string - **please contact us!**

We offer the possibility of installing aftercrop seeders to most of the machines in our offer. More information on page 38.

1. Single axle trolley (type A) - light type

TYPE A

- wheels 400/60-15.5
- double lifting cylinder
- drawbar



2. Single axle trolley (type B) - Pöttinger type



- wheels 500/60-15.5
- single lifting cylinder
- drawbar

TYPE B

3. Single axle trolley (type C) - heavy type

TYPE C

- wheels 520/50-17
- double lifting cylinder
- hydraulic folding rollers with two cylinders
- hydraulic adjustment of working depth
- drawbar



POWERDISC HR



STANDARD

- maintenance-free hubs
- 2 rows of discs Ø560 mm
- rubber shock absorbers
- tubular roller Ø560 mm OR flat bar roller Ø500 mm
- side screens
- spacing between disc rows 100 cm
- 2 hydraulic cylinders with overload valves
- hydraulic locks

- supporting wheels
- floating side screens
- wavy Bulldog discs Ø560 mm or Ø610 mm
- Italian disccs Ø560 mm by OFAS
- Italian disccs Ø560 mm by AMA
- Italian disccs Ø610 mm by AMA
- LED lighting
- row of springs tines
- hydraulic depth adjustment
- turnbuckle with ratchet

OPTIONS

ROLLERS

- FLEX ring roller Ø450 mm
- flat-bar notched roller Ø500 mm
- croskill roller Ø500 mm
- packer roller Ø500/ Ø600 mm
- rubber roller Ø500 mm
- V-ring roller Ø500/ Ø600 mm
- C-ring roller Ø500/ Ø600 mm
- T-ring roller Ø500/ Ø600 mm
- cracker roller Ø600 mm
- tandem C-ring roller Ø500 mm

TECHNICAL DATA

Model	Working width [m]	Count discs [pcs.]	Weight [kg]	Power demand [HP]	Efficiency [ha/h]
Powerdisc HR 400	4,0	32	2 450	110- 150	2,80 - 3,90
Powerdisc HR 500	5,0	40	3 050	140 - 180	4,00 - 6,00
Powerdisc HR 600	6,0	48	3 850	160 - 250	4,50 - 6,50

Tandem rollers available: C-ring / T-ring / V-ring / tubular-string / tubular-tubular / string-string - **please contact us!**
 We offer the possibility of installing aftercrop seeders to most of the machines in our offer. More information on page 38.



AGRONA





AGRONA
Better farming



AGRONA

Manufacturer of agricultural machinery

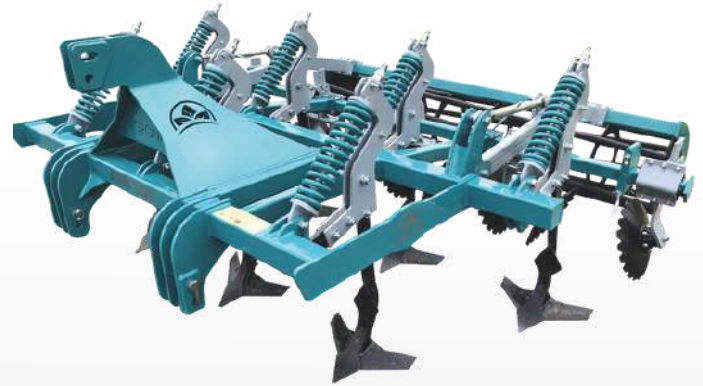
Better farming

STUBBLE CULTIVATORS

AP/APN



AP



APN

STANDARD

- maintenance-free hubs
- 2 rows of 60×25 tines
- Vogel&Noot type of working parts
- shear bolt protection AP or spring protection APN
- double spring
- row of discs Ø460 mm with rubber protection
- tubular roller Ø560 mm OR flat bar roller Ø500 mm
- folding side discs in the 3 m version
- working depth adjustment with turnbuckles

OPTIONS

- hydraulic depth adjustment
- automatic catch bar
- turnbuckle with ratchet
- Lemken working elements
- LED lighting

ROLLERS

- FLEX ring roller Ø450 mm
- flat-bar notched roller Ø500 mm
- croskill roller Ø500 mm
- packer roller Ø500/ Ø600 mm
- rubber roller Ø500 mm
- V-ring roller Ø500/ Ø600 mm
- C-ring roller Ø500/ Ø600 mm
- T-ring roller Ø500/ Ø600 mm
- cracker roller Ø600 mm
- tandem C-ring roller Ø500 mm

TECHNICAL DATA

Model	Working width [m]	Count tines/discs [pcs.]	Weight [kg]	Power demand [HP]	Efficiency [ha/h]
AP 180	1,8	4/5	900	60 - 75	1,00 - 1,80
AP 220	2,2	5/6	1 100	80 - 100	1,50 - 2,00
AP 260	2,6	6/7	1 180	100 - 120	1,80 - 2,50
AP 300	3,0	7/8	1 380	110 - 140	2,10 - 2,60
AP 400	3,8	9/10	1 860	160 - 200	2,70 - 4,00

Model	Working width [m]	Count tines/discs [pcs.]	Weight [kg]	Power demand [HP]	Efficiency [ha/h]
APN 180	1,8	4/5	900	60 - 75	1,00 - 1,80
APN 220	2,2	5/6	1 100	80 - 100	1,50 - 2,00
APN 260	2,6	6/7	1 180	100 - 120	1,80 - 2,50
APN 300	3,0	7/8	1 380	110 - 140	2,10 - 2,60
APN 400	3,8	9/10	1 860	160 - 200	2,70 - 4,00

Tandem rollers available: C-ring / T-ring / V-ring / tubular-string / tubular-tubular / string-string - **please contact us!**

We offer the possibility of installing aftercrop seeders to most of the machines in our offer. More information on page 38.



STANDARD

- maintenance-free hubs
- 2 rows of tines with spiral protection
- Vogel&Noot type of working parts
- row of discs Ø460 mm with rubber protection
- tubular roller Ø560 mm OR flat bar roller Ø500 mm
- folding side discs in the 3 m version
- working depth adjustment with turnbuckles

- hydraulic depth adjustment
- automatic catch bar
- LED lighting
- turnbuckle with ratchet

OPTIONS

ROLLERS

- FLEX ring roller Ø450 mm
- flat-bar notched roller Ø500 mm
- croskill roller Ø500 mm
- packer roller Ø500/ Ø600 mm
- rubber roller Ø500 mm
- V-ring roller Ø500/ Ø600 mm
- C-ring roller Ø500/ Ø600 mm
- T-ring roller Ø500/ Ø600 mm
- cracker roller Ø600 mm
- tandem C-ring roller Ø500 mm

TECHNICAL DATA

Model	Working width [m]	Count tines/discs [pcs.]	Weight [kg]	Power demand [HP]	Efficiency [ha/h]
APS 180	1,8	4/5	790	60 - 75	1,00 - 1,80
APS 220	2,2	5/6	800	65 - 80	1,50 - 2,00
APS 260	2,6	6/7	970	80 - 100	1,80 - 2,50
APS 300	3,0	7/8	1070	100 - 120	2,10 - 2,60
APS 400	3,8	9/10	1400	140 - 170	2,70 - 4,00

Tandem rollers available: C-ring / T-ring / V-ring / tubular-string / tubular-tubular / string-string - **please contact us!**
 We offer the possibility of installing aftercrop seeders to most of the machines in our offer. More information on page 38.

skimming aggregate

TERRAFLEX M



TERRAFLEX M



TERRAFLEX M+

STANDARD

- maintenance-free hubs
- 2 rows of 60x25 tines with Delta Flex side undercuts or Horsch with bolt protection (Terraflex M)
- 2 rows of 60x25 tines with Delta Flex side undercuts or Horsch with spring protection (Terraflex M+)
- row of discs Ø460 mm with rubber protection
- tubular roller Ø560 mm OR flat bar roller Ø500 mm
- working depth adjustment with turnbuckles

OPTIONS

- hydraulic depth adjustment
- reinforced working elements
- LED lighting

ROLLERS

- FLEX ring roller Ø450 mm
- flat-bar notched roller Ø500 mm
- croskill roller Ø500 mm
- packer roller Ø500/ Ø600 mm
- rubber roller Ø500 mm
- V-ring roller Ø500/ Ø600 mm
- C-ring roller Ø500/ Ø600 mm
- T-ring roller Ø500/ Ø600 mm
- cracker roller Ø600 mm
- tandem C-ring roller Ø500 mm

TECHNICAL DATA

Model	Working width [m]	Count tines/discs [pcs.]	Weight [kg]	Power demand [HP]	Efficiency [ha/h]
Terraflex M220	2,2	5/6	1000	80-120	1,20-2,10
Terraflex M260	2,6	6/7	1100	90-140	1,80-2,20
Terraflex M300	3,0	7/8	1180	100-150	2,00-3,00
Terraflex M360	3,6	9/10	1450	120-180	2,60-3,50

Model	Working width [m]	Count tines/discs [pcs.]	Weight [kg]	Power demand [HP]	Efficiency [ha/h]
Terraflex M220+	2,2	5/6	1160	80-120	1,20-2,10
Terraflex M260+	2,6	6/7	1280	90-140	1,80-2,20
Terraflex M300+	3,0	7/8	1400	100-150	2,00-3,00
Terraflex M360+	3,6	9/10	1700	120-180	2,60-3,50

Tandem rollers available: C-ring / T-ring / V-ring / tubular-string / tubular-tubular / string-string - **please contact us!**
 We offer the possibility of installing aftercrop seeders to most of the machines in our offer. More information on page 38.



STANDARD

- 3 rows of 60x25 tines with Delta Flex side undercuts
- maintenance-free hubs
- NON-STOP spring protection with double spring
- tubular roller Ø560 mm OR flat bar roller Ø500 mm
- hydraulic adjustment of working depth
- hydraulically folding version of the Terraflex 420
- row of discs Ø460 mm with rubber protection

OPTIONS

- LED lighting
- single axle transport trolley (behind the roller)
- reinforced working elements

ROLLERS

- FLEX ring roller Ø450 mm
- flat-bar notched roller Ø500 mm
- croskill roller Ø500 mm
- packer roller Ø500/ Ø600 mm
- rubber roller Ø500 mm
- V-ring roller Ø500/ Ø600 mm
- C-ring roller Ø500/ Ø600 mm
- T-ring roller Ø500/ Ø600 mm
- cracker roller Ø600 mm
- tandem C-ring roller Ø500 mm

TECHNICAL DATA

Model	Working width [m]	Count tines/discs [pcs.]	Weight [kg]	Power demand [HP]	Efficiency [ha/h]
Terraflex 250	2,5	8/6	1 780	120 - 160	2,80 - 3,90
Terraflex 300	3,0	10/8	1 950	130 - 170	3,20 - 4,50
Terraflex 360	3,6	12/9	2 400	150 - 200	4,00 - 6,00
Terraflex 420	4,2	14/10	3 500	190 - 250	4,50 - 6,50

Tandem rollers available: C-ring / T-ring / V-ring / tubular-string / tubular-tubular / string-string - **please contact us!**
We offer the possibility of installing aftercrop seeders to most of the machines in our offer. More information on page 38.

stubble cultivator STUBBLER



STANDARD

- 4 rows of S-tines 70x12 z goosefoot 180 mm Bellota
- working depth adjustment with turnbuckles
- unfolding using 4 hydraulic cylinders (in the H400/500/600 version)
- tubular roller Ø560 mm OR flat bar roller Ø500 mm

- row of spring tines (only behind roller)
- LED lighting
- hydraulic depth adjustment
- goosefoot 200mm
- wzmocnienie zęba
- mulching knife roller on the front of machine with hydraulic adjustment of the working depth
- support wheels with depth adjustment (2 pcs.)

OPTIONS

ROLLERS

- FLEX ring roller Ø450 mm
- flat-bar notched roller Ø500 mm
- croskill roller Ø500 mm
- packer roller Ø500/ Ø600 mm
- rubber roller Ø500 mm
- V-ring roller Ø500/ Ø600 mm
- C-ring roller Ø500/ Ø600 mm
- T-ring roller Ø500/ Ø600 mm
- cracker roller Ø600 mm
- tandem C-ring roller Ø500 mm

TECHNICAL DATA

Model	Working width [m]	Count tines [pcs.]	Weight [kg]	Power demand [HP]
Stubbler 300	3,0	17	950	80
Stubbler H400	4,0	26	1 950	100
Stubbler H500	5,0	32	2 100	120
Stubbler H600	6,0	38	2 350	140

Tandem rollers available: C-ring / T-ring / V-ring / tubular-string / tubular-tubular / string-string - **please contact us!**

We offer the possibility of installing aftercrop seeders to most of the machines in our offer. More information on page 38.



AGRONA





AGRONA
Better farming



AGRONA

Manufacturer of agricultural machinery

Better farming

CULTIVATION

POWERSEED



STANDARD

- maintenance-free hubs
- 2 rows of discs Ø510 mm or Ø560 mm
- rubber shock absorbers
- tubular roller Ø560 mm OR flat bar roller Ø500 mm
- hydropack on two cylinders
- side screens
- folding side discs in the 3 m version
- working depth adjustment with turnbuckles
- spacing between disc rows - 85 cm

OPTIONS

- Italian disccs Ø560 mm by OFAS
- Italian disccs Ø560 mm by AMA
- Italian disccs Ø610 mm by AMA
- LED lighting
- turnbuckle with ratchet
- row of springs tines
- floating side screens
- hydraulic depth adjustment
- automatic catch bar
- support for seeder

ROLLERS

- FLEX ring roller Ø450 mm
- flat-bar notched roller Ø500 mm
- croskill roller Ø500 mm
- packer roller Ø500/ Ø600 mm
- rubber roller Ø500 mm
- V-ring roller Ø500/ Ø600 mm
- C-ring roller Ø500/ Ø600 mm
- T-ring roller Ø500/ Ø600 mm
- cracker roller Ø600 mm
- tandem C-ring roller Ø500 mm

TECHNICAL DATA

Model	Working width [m]	Count discs [pcs.]	Weight [kg]	Power demand [HP]
Powerseed 250	2,5	20	1270	60 - 90
Powerseed 270	2,7	22	1350	75 - 120
Powerseed 300	3,0	24	1420	90 - 130
Powerseed 400	4,0	32	1850	120 - 150

Tandem rollers available: C-ring / T-ring / V-ring / tubular-string / tubular-tubular / string-string - **please contact us!**
 We offer the possibility of installing aftercrop seeders to most of the machines in our offer. More information on page 38.

trailed disc aggregate with hydrolift

POWERSEED +



STANDARD

- maintenance-free hubs
- 2 rows of discs Ø510 mm or Ø560 mm
- wheels roller
- rubber shock absorbers
- hydropack on two cylinders
- side screens
- folding side discs in the 3 m version
- hydraulic depth adjustment
- spacing between disc rows - 85 cm
- drawbar

- Italian discs Ø560 mm by OFAS
- Italian discs Ø560 mm by AMA
- LED lighting
- floating side screens
- hydraulic support leg
- hydraulically adjustable drawbar

OPTIONS

TECHNICAL DATA

Model	Working width [m]	Count discs [pcs.]	Weight [kg]	Power demand [HP]	Efficiency [ha/h]
Powerseed 300+	3,0	24	2 250	80 - 110	2,00 - 3,00

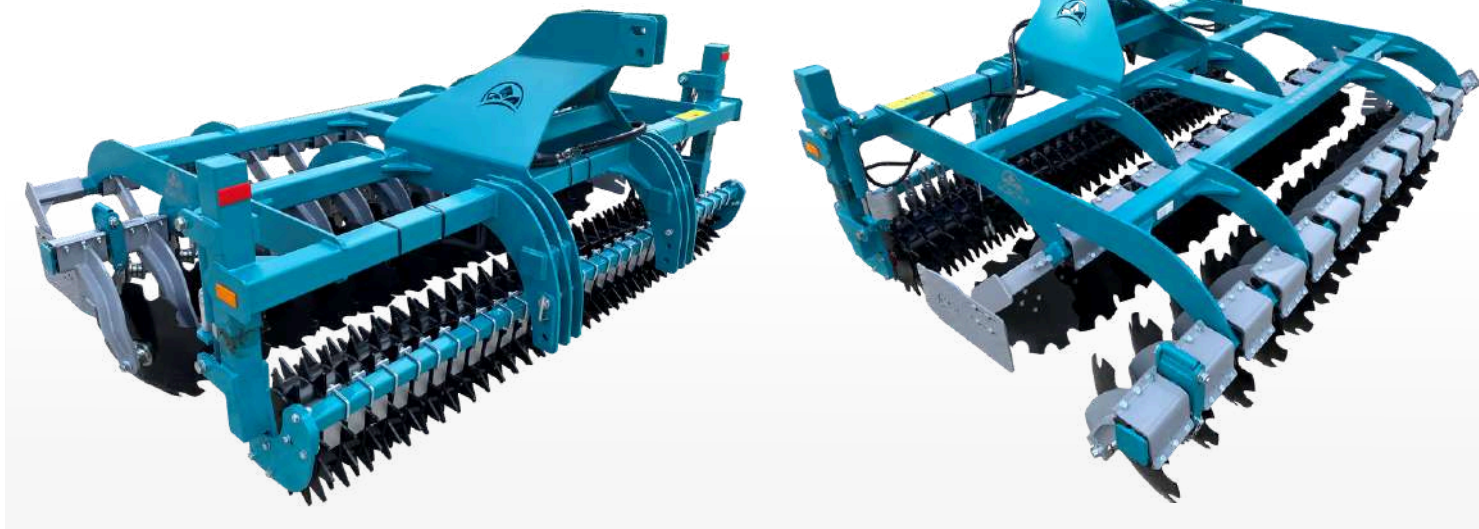
Tandem rollers available: C-ring / T-ring / V-ring / tubular-string / tubular-tubular / string-string - **please contact us!**

We offer the possibility of installing aftercrop seeders to most of the machines in our offer. More information on page 38.

disc harrow

FRONTDISC

cultivation



STANDARD

- maintenance-free hubs
- 2 rows of discs Ø560 mm
- rubber shock absorbers
- tubular roller Ø560 mm OR flat bar roller Ø500 mm
- side screens
- folding side discs in the 3 m version
- hydraulic depth adjustment
- spacing between disc rows - 75 cm

OPTIONS

- Italian disccs Ø560 mm by OFAS
- Italian disccs Ø560 mm by AMA
- Italian disccs Ø610 mm by AMA
- wavy Bulldog discs Ø560 mm
- LED lighting
- floating side screens

ROLLERS

- FLEX ring roller Ø450 mm
- flat-bar notched roller Ø500 mm
- packer roller Ø500 mm
- V-ring roller Ø500 mm
- C-ring roller Ø500 mm

TECHNICAL DATA

Model	Working width [m]	Count discs [pcs.]	Weight [kg]	Power demand [HP]	Efficiency [ha/h]
Frontdisc 300	3,0	24	1 580	>200	1,50 – 2,00

Tandem rollers available: C-ring / T-ring / V-ring / tubular-string / tubular-tubular / string-string - **please contact us!**
 We offer the possibility of installing aftercrop seeders to most of the machines in our offer. More information on page 38.



STANDARD

- 2 rows of straight or curved 32x12 tines
- tubular roller Ø560 mm OR flat bar roller Ø500 mm
- front string rollers
- hydropack on two cylinders
- adjustment of working depth

- LED lighting
- automatic catch bar
- support for seeder

OPTIONS

ROLLERS

- FLEX ring roller Ø450 mm
- flat-bar notched roller Ø500 mm
- croskill roller Ø500 mm
- packer roller Ø500/ Ø600 mm
- rubber roller Ø500 mm
- V-ring roller Ø500/ Ø600 mm
- C-ring roller Ø500/ Ø600 mm
- T-ring roller Ø500/ Ø600 mm
- cracker roller Ø600 mm
- tandem C-ring roller Ø500 mm

TECHNICAL DATA

Model	Working width [m]	Count tines [pcs.]	Weight [kg]	Power demand [HP]	Efficiency [ha/h]
AUS 250	2,5	16	750	60 - 80	1,50 - 2,00
AUS 270	2,7	18	810	80 - 100	1,80 - 2,60
AUS 300	3,0	20	850	90 - 110	2,00 - 3,10

Tandem rollers available: C-ring / T-ring / V-ring / tubular-string / tubular-tubular / string-string - **please contact us!**

We offer the possibility of installing aftercrop seeders to most of the machines in our offer. More information on page 38.

AU



STANDARD

- 4 rows of tines type "S" 32x12
- front string roller
- double flat-bar notched roller
- 4 hydraulic cylinders with overload valves

OPTIONS

- tractor track eradicators
- reinforced elastic tines type "S"
- LED lighting

ROLLERS

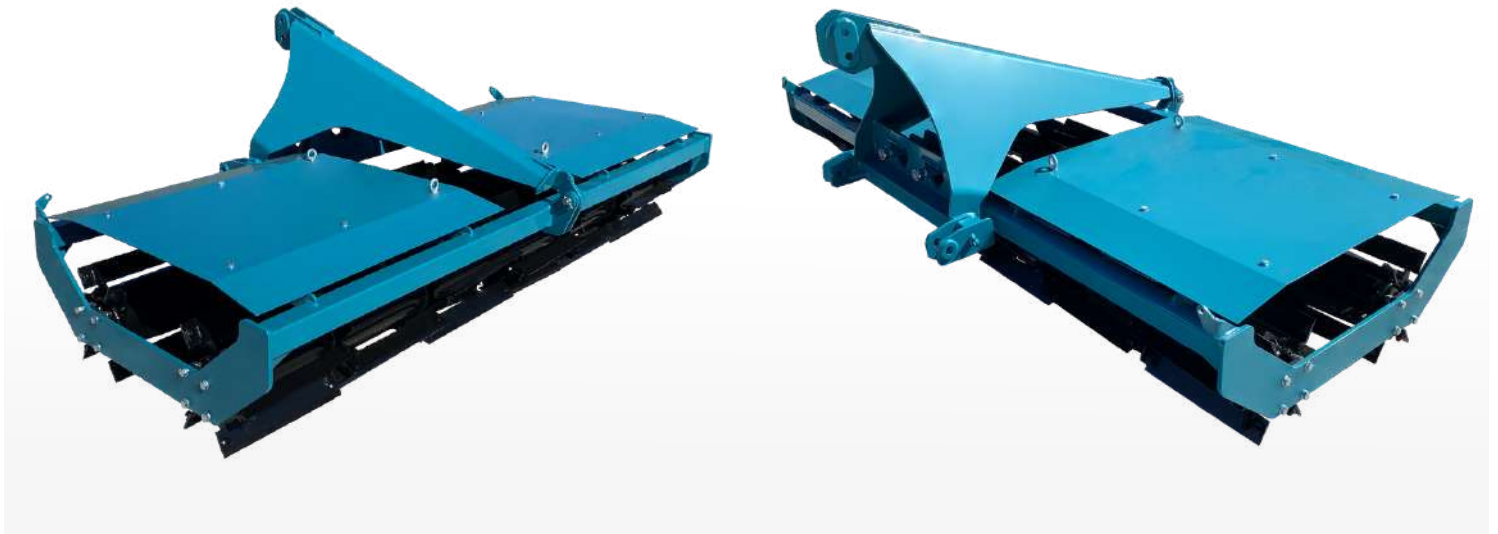
- croskill roller Ø500 mm

TECHNICAL DATA

Model	Working width [m]	Count tines [pcs.]	Weight [kg]	Power demand [HP]	Efficiency [ha/h]
AU 360	3,6	36	1 550	85 - 100	2,0 - 4,0
AU 420	4,2	42	1 750	100 - 120	2,0 - 5,0
AU 500	5,0	50	1 980	120 - 140	3,5 - 6,0
AU 560	5,6	56	2 150	140 - 160	4,0 - 7,0

Tandem rollers available: C-ring / T-ring / V-ring / tubular-string / tubular-tubular / string-string - **please contact us!**

We offer the possibility of installing aftercrop seeders to most of the machines in our offer. More information on page 38.



STANDARD

- 2 rows of cutting rollers $\varnothing 420$ mm
- rollers cover

- LED lighting

OPTIONS

TECHNICAL DATA

Model	Working width [m]	Weight [kg]	Power demand [HP]
WNT 300	3,0	840	60

Tandem rollers available: C-ring / T-ring / V-ring / tubular-string / tubular-tubular / string-string - **please contact us!**
 We offer the possibility of installing aftercrop seeders to most of the machines in our offer. More information on page 38.



AGRONA
Better farming



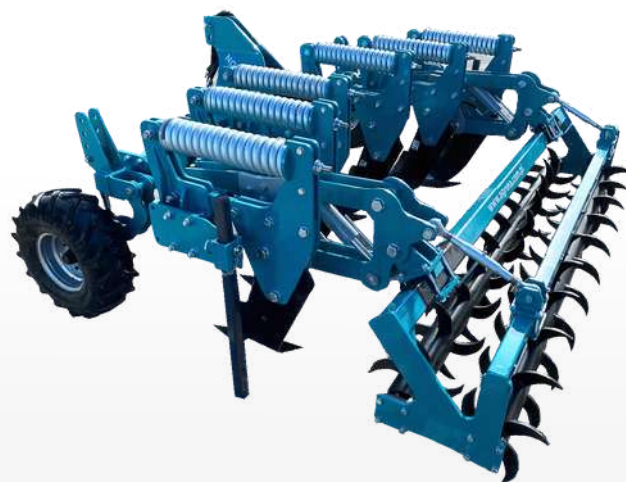
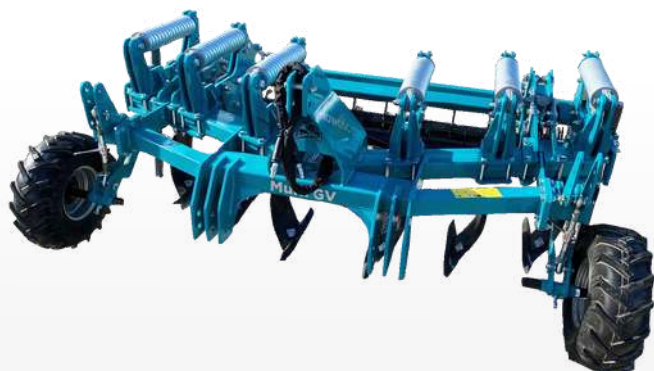
AGRONA

Manufacturer of agricultural machinery

Better farming

SUBSOILERS

subsoiler MULTI GV



STANDARD

- V-shaped frame layout
- Michel-type tines with interchangeable chisels
- under frame 90 cm
- adjustable tine spacing
- shear bolt (GV) or spring NON-STOP (GV+) or double spring NON STOP (GV++) protection
- support leg
- supporting wheels

- LED lighting
- hydraulic depth adjustment

OPTIONS

ROLLERS

- wał kolczasty Ø450 mm tandem z hydrauliczną regulacją głębokości pracy
- V-ring roller Ø500 mm
- C-ring roller Ø500 mm
- T-ring roller Ø500 mm
- cracker roller Ø600 mm
- FLEX ring roller Ø450 mm
- tubular roller Ø560 mm

TECHNICAL DATA

Model	Working width [m]	Count tines [pcs.]	Weight [kg]	Power demand [HP]	Efficiency [ha/h]	Working depth [cm]	Protection system
GV 300 / 4Z	3,0	4	1 050	110 - 130	1,5 - 2,5	50	bolt
GV 300 / 6Z	3,0	6	1 200	130 - 150	1,7 - 2,5	50	bolt
GV 400 / 8Z	4,0	8	1 560	150 - 180	2,6 - 3,8	50	bolt
Model	Working width [m]	Count tines [pcs.]	Weight [kg]	Power demand [HP]	Efficiency [ha/h]	Working depth [cm]	Protection system
GV 300+ / 4Z	3,0	4	1 350	120 - 140	1,5 - 2,5	50	spring
GV 300+ / 6Z	3,0	6	1 650	140 - 170	1,6 - 2,5	50	spring
GV 400+ / 8Z	4,0	8	2 000	170-200	2,6 - 3,8	50	spring
Model	Working width [m]	Count tines [pcs.]	Weight [kg]	Power demand [HP]	Efficiency [ha/h]	Working depth [cm]	Protection system
GV 300++ / 4Z	3,0	4	1 450	140 - 160	1,5 - 2,5	50	double spring
GV 300++ / 6Z	3,0	6	1 750	160 - 190	1,7 - 2,5	50	double spring
GV 400++ / 8Z	4,0	8	2 600	180 - 220	2,6 - 3,8	50	double spring

**STANDARD**

- tandem spike roller
- shear bolt protection
- 2 rows of Ripper type tines with side undercuts
- hydraulic adjustment of working depth

- floating foldable side screens
- hydraulically foldable floating side screens
- LED lighting

OPTIONS**TECHNICAL DATA**

Model	Working width [m]	Count tines [pcs.]	Weight [kg]	Power demand [HP]	Efficiency [ha/h]	Working depth [cm]
Plower M 250	2,5	5	1 300	130 - 160	1,2 - 1,7	45
Plower M 300	3,0	5	1 430	140 - 200	1,6 - 2,5	45
Plower M 300+	3,0	7	1 700	160 - 270	1,6 - 2,5	45

Tandem rollers available: C-ring / T-ring / V-ring / tubular-string / tubular-tubular / string-string - **please contact us!**

We offer the possibility of installing aftercrop seeders to most of the machines in our offer. More information on page 38.

subsoiler MULTI GI



STANDARD

- I-shaped frame layout
- tines with interchangeable chisels
- under frame - 90 cm
- shear bolt protection
- support leg
- hydrolift

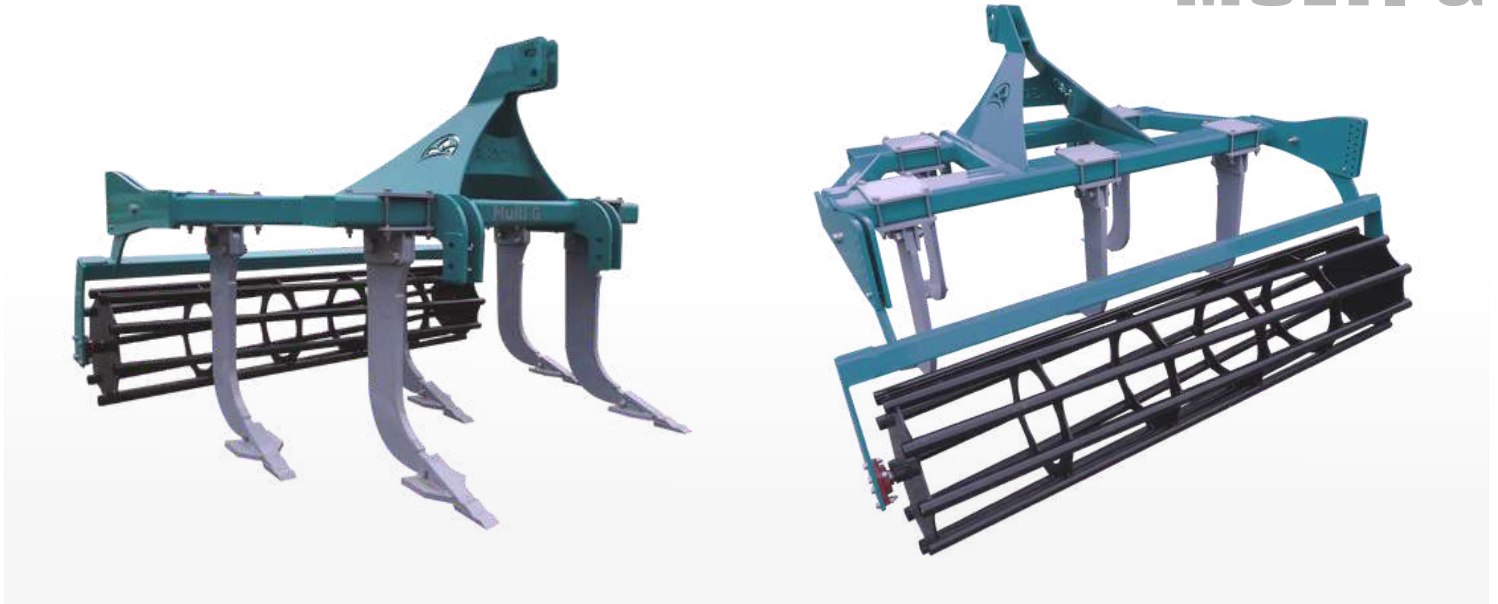
OPTIONS

- supporting wheels
- LED lighting

TECHNICAL DATA

Model	Working width [m]	Count tines [pcs.]	Weight [kg]	Power demand [HP]	Efficiency [ha/h]	Working depth [cm]
Multi GI 30 / 4Z	3,0	4	950	130	2,30	55
Multi GI 30 / 6Z	3,0	6	1 020	180	2,30	55
Multi GI 35 / 6Z	3,5	6	1 080	180	2,80	55
Multi GI 40 / 6Z	4,0	6	1 150	180	3,20	55
Multi GI 40 / 8Z	4,0	8	1 250	200	3,20	55

Tandem rollers available: C-ring / T-ring / V-ring / tubular-string / tubular-tubular / string-string - **please contact us!**
We offer the possibility of installing aftercrop seeders to most of the machines in our offer. More information on page 38.



STANDARD

- two rows of tines with adjustable spacing
- under frame 90 cm
- working depth up to do 60 cm
- shear bolt protection
- tubular roller Ø560 mm OR flat bar roller Ø500 mm

ROLLERS

- FLEX ring roller Ø450 mm
- flat-bar notched roller Ø500 mm
- tandem spike roller Ø450 mm
- V-ring roller Ø500/ Ø600 mm
- C-ring roller Ø500/ Ø600 mm
- T-ring roller Ø500/ Ø600 mm

TECHNICAL DATA

Model	Working width [m]	Count tines [pcs.]	Weight [kg]	Power demand [HP]	Efficiency [ha/h]
Multi G2	2,4	2	800	60 - 85	0,7 - 1,0
Multi G3	2,4	3	850	85 - 110	1,0 - 1,4
Multi G4	3,0	4	950	110 - 130	1,4 - 1,7
Multi G5	3,0	5	1000	130 - 180	1,7 - 2,0

Tandem rollers available: C-ring / T-ring / V-ring / tubular-string / tubular-tubular / string-string - **please contact us!**

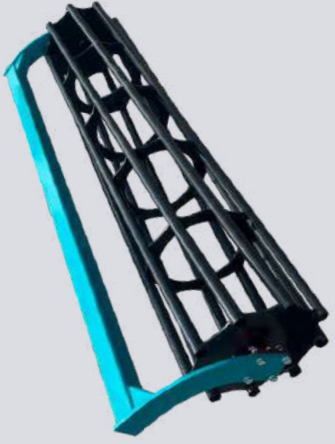
We offer the possibility of installing aftercrop seeders to most of the machines in our offer. More information on page 38.



AGRONA
Better farming



Flat-bar roller or flat-bar notched roller
Ø500 mm



Tubular roller
Ø560 mm or Ø600 mm



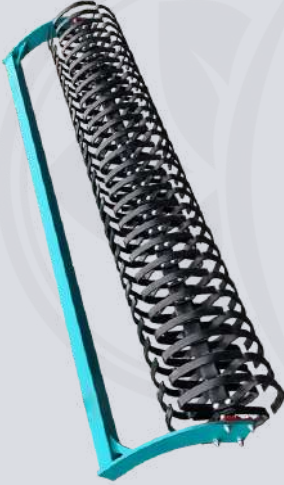
Rubber roller
Ø500 mm



Packer roller
Ø500 mm or Ø600 mm



Tandem C-ring roller
Ø500 mm



FLEX ring roller
Ø450 mm or Ø550 mm



V-ring roller
Ø500 mm or Ø600 mm



Cracker roller
Ø600 mm

AGROMA

Better farming

ROLLERS

Tandem rollers available: C-ring / T-ring / V-ring (+40% of the price of a standard single roller)
Tandem rollers also available: tubular-string / tubular-tubular / string-string - please contact us!
For more information, please contact us by phone: +48 604 483 950 or by e-mail: kontakt@agrona.com.pl

We offer the possibility of installing aftercrop seeders to most of the machines in our offer.

Aftercrop seeder APV



Type	PS 120 M1 driver 1.2	PS 200 M1 driver 1.2	PS 300 M1 driver 1.2
Width [m]	1-6	1-6	1-6
Tank capacity [L]	120	200	300
Number of sowing hoses [pcs.]	8	8	8
Power [V]	12	12	12
Weight [kg]	45	60	70

Aftercrop seeder Bagramet



Typ	RS 100
Tank capacity [L]	110
Sowing range [M]	2-15
Weight [kg]	35

Mounting to the machine regardless of the model included in the price

AFTERCROP SEEDER



AGRONA
Better farming



AGRONA



+48 604 483 950



+48 602 771 695



kontakt@agrona.com.pl



www.agrona.com.pl

ul. Słoneczna 17
97-570 Przedbórz

Production facility:

Wola Przedborska 17D
97-570 Przedbórz

NIP: 772-120-48-60



@Agrona



@agrona



@agrona_agricultural_machinery